

ISUZU



UNLOCKING
TECHNOLOGY



**ADVANCED
DIAGNOSTICS**

A

APPLICATIONS

ADS135 ADVISUZU D-DIAGNOSTICS.CO.UK

3

B

DIAGNOSTIC SOCKETS LOCATIONS

ISUZU

4

WWW.ADUSA.US

C

SPECIAL FUNCTIONS

5-6









WWW.ADVANCED-DIAGNOSTICS.CO.UK

WWW.ADUSA.US

APPLICATIONS

ISUZU



				1234		PRO 		AD100 
COLARADO *	3.0 L DIESEL 3.0L 4JJI-TC	✓	✓	✓	@ - UK ONLY	ADC151	A	*
TROOPER (12 VOLT ONLY)	ALL MODELS	✓	✓	✓	@ - UK ONLY	ADC151	A	ADC110-B
RODEO	ALL MODELS	✓	✓	✓	@ - UK ONLY	ADC151	A	ADC110-B
RODEO RA *	2007⇒ 3.0 L DIESEL 3.0L 4JJI-TC	✓	✓	✓	@ - UK ONLY	ADC151	A	*
DMAX	ALL MODELS	✓	✓	✓	@ - UK ONLY	ADC151	A	ADC110-B
DMAX *	3.0 L DIESEL 3.0L 4JJI-TC	✓	✓	✓	@ - UK ONLY	ADC151	A	*
TF *	3.0 L DIESEL 3.0L 4JJI-TC	✓	✓	✓	@ - UK ONLY	ADC151	G	*
TF *	2.5 L DIESEL 2.5L 4JK1-TC	✓	✓	✓	@ - UK ONLY	ADC151	G	*
TF *	V6 PETROL	✓	✓	✓	@ - UK ONLY	ADC151	G	*
TF *	2.8L DIESEL	✓	✓	✓	@ - UK ONLY	ADC151	G	*

* = PRO ONLY

DIAGNOSTIC SOCKETS/PORTS

B

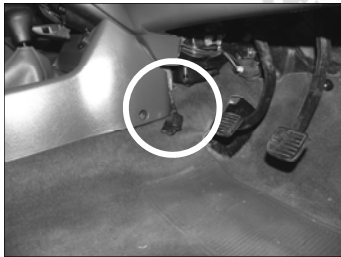
ISUZU



TROOPER
2005 >



RODEO



TROOPER
> 2004

WWW.ADUSA.US

WWW.ADVANCED-DIAGNOSTICS.CO.UK

WWW.ADUSA.US

SPECIAL FUNCTIONS

ISUZU

PROGRAM KEYS

VEHICLE SELECTION

+ HYUNDAI
+ ISUZU
 + KIA
 + LANDROVER
 + MERCEDES
 + MITSUBISHI

VEHICLE SELECTION

+ RODEO
+ TROOPER

PROGRAM KEYS

SWITCH IGNITION ON

PRESS ENTER KEY

ECU IDENTIFICATION

ISUZU RODEO IMMO
 ECU NO. 97377324

PRESS ENTER KEY

DIAGNOSTIC MENU

ECU IDENTIFICATION
 FAULT CODES
LIVE DATA
 SPECIAL FUNCTIONS

LIVE DATA

TP KEY 1 PROG
 TP KEY 2 PROG
 TP KEY 3 NOT PROG.
 TP KEY 4 NOT PROG
 TP KEY 5 NOT PROG

PROGRAM KEYS

DIAGNOSTIC MENU

ECU IDENTIFICATION
 FAULT CODES
 LIVE DATA
SPECIAL FUNCTIONS

DIAGNOSTIC MENU

PROGRAM KEYS
CLEAR KEYS

CLEAR KEYS

WARNING
 ALL KEYS WILL
 BE CLEARED

OK-ENTER CLEAR=BACK

SECURITY CODE

1234



CLEAR KEYS

ACCESS GAINED

PRESS ENTER KEY

CLEAR KEYS

PLEASE WAIT

PRESS ENTER KEY

PROGRAM KEYS

CLEAR KEYS

SUCCESSFUL

PRESS ENTER KEY

CLEAR KEYS

IGNITION OFF

PRESS ENTER KEY

DIAGNOSTIC MENU

PROGRAM KEYS
CLEAR KEYS

PROGRAM KEYS

SWITCH IGNITION OFF

PRESS ENTER KEY

PROGRAM KEYS

INSERT KEY TO PROGRAM
 SWITCH IGNITION ON

PRESS ENTER KEY

PROGRAM KEYS

KEYS PROGRAMMED : 0
 MAX 5 KEYS POSSIBLE

PRESS ENTER KEY

SPECIAL FUNCTIONS

ISUZU

PROGRAM KEYS

SECURITY CODE

1234

x

✓

PROGRAM KEYS

PROGRAM KEYS

PROGRAM NEXT KEY

YES = ENTER NO = BACK

PROGRAM KEYS

ACCESS GAINED

PRESS ENTER KEY

CLEAR KEYS

IGNITION OFF

PRESS ENTER KEY

PROGRAM KEYS

WARNING
ALL KEYS WILL
BE CLEARED

OK-ENTER CLEAR=BACK

NOTE : A USED PROGRAMMED KEY
CANNOT BE USED ON A
DIFFERENT VEHICLE.

PROGRAM KEYS

NEW KEY WITH
VIRGIN TRANSPONDER

YES = ENTER NO = BACK

PROGRAM KEYS

PROCEDURE COMPLETE
IGNITION OFF

PRESS ENTER KEY

PROGRAM KEYS

SWITCH IGNITION ON

PRESS ENTER KEY

REMOTE PROGRAMMING

F

Remote Programming **AMIGO (1998-2000)**
RODEO (1998-2004)
TROOPER (1998-2002)

AXIOM (2001-2004)
RODEO SPORT (2001-2003)

NEW REMOTE PROGRAMMING PROCEDURE

NOTE : This will erase all existing remotes

1. Open drivers door.
2. Insert key into ignition.
3. Within 5 seconds, turn ignition to ACC then to OFF 3 times on 5 seconds.
4. Within 10 seconds, close and open drivers door twice.
5. Within 10 seconds turn ignition to ACC then OFF 5 times.
6. Close and open drivers door.

NOTE : Doors should LOCK then UNLOCK.

7. Within 20 seconds press remote LOCK or UNLOCK button.
8. Doors should LOCK then UNLOCK.
9. Within 20 seconds press the remote LOCK or UNLOCK button.
10. Doors should LOCK and UNLOCK.

NOTE : If doors lock then unlock 3 times procedure has failed and it must be repeated.

ADDITIONAL REMOTE PROGRAMMING PROCEDURE

1. Open drivers door.
2. Insert key into ignition.
3. Within 5 seconds, turn ignition to ACC then to OFF 3 times on 5 seconds.
4. Within 10 seconds, close and open drivers door twice.
5. Within 10 seconds turn ignition to ACC then OFF 3 times.
6. Close and open drivers door.

NOTE : Doors should LOCK then UNLOCK.

7. Within 20 seconds press remote LOCK or UNLOCK button.
8. Doors should LOCK then UNLOCK.
9. Within 20 seconds press the remote LOCK or UNLOCK button.
10. Doors should LOCK and UNLOCK.

NOTE : If doors lock then unlock 3 times procedure has failed and it must be repeated.

Remote Programming **ASCENDER (2003-2008)**

REMOTE PROGRAMMING

1. Close all the doors
2. Insert key into ignition.
3. Press and hold door interior UNLOCK switch.
4. Turn ignition from ON to OFF 2 times.
5. Release interior UNLOCK switch.
6. Doors will LOCK and UNLOCK to confirm programming mode.
7. Press the LOCK and UNLOCK buttons on the first transmitter together.
8. After 15 seconds the doors will LOCK and UNLOCK to confirm programming.
9. Release LOCK and UNLOCK buttons on remote control.
10. Repeat steps 7-9 for all remote controls.
11. Switch ignition ON to exit programming mode.

NOTE : Maximum 4 remote controls.



Advanced Diagnostics Ltd

Diagnostics House
Eastboro Fields
Hemdale
Nuneaton
CV11 6GL

T: +44(0)2476 347000

F: +44(0)2476 347100

W: www.advanced-diagnostics.co.uk

**ADVANCED
DIAGNOSTICS**